

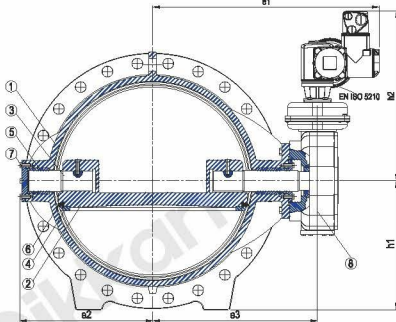
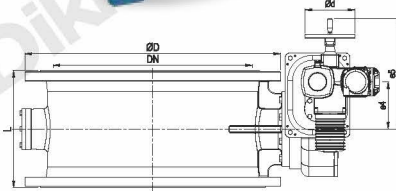
Ductile Iron Body

Stainless Steel Stem

PN 16



Dikkan figure **28EAC.K66-PN16**



Technical features

| | |
|-------------------|--|
| Standard | DIN EN 593 (DIN 3354) - Double Flanged |
| Face to face | DIN EN 558 Series 14 (DIN 3202 F4) |
| Flange dimension | DIN Flanges acc. to EN 1092-2/B (DIN 2501) |
| Flange connection | PN 16 |
| Options | Rubber lining |

- Ductile Iron Dikkan double flanged butterfly valves with double eccentric disc. **Body seat, stainless steel welded and microfinished, face to face length acc. to EN 558 Series 14, equipped with worm gearbox and multi-turn actuator in order to provide for the automation of the valve.**
- Application: Neutral water, drinking water, waste water, irrigation lines, water supply stations, sewage, tse application, drainage.

Pressure & temperature ranges

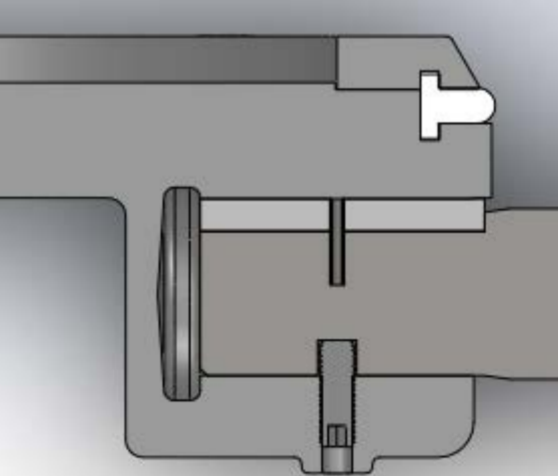
| Bore | Pressure rating | Working pressure [bar] | | Hydro test pressure [bar] | |
|------------------|-----------------|------------------------|--------|---------------------------|--|
| | | 120 °C | Casing | Closure | |
| DN 100 - DN 2000 | PN 16 | 16 | 24 | 17.6 | |

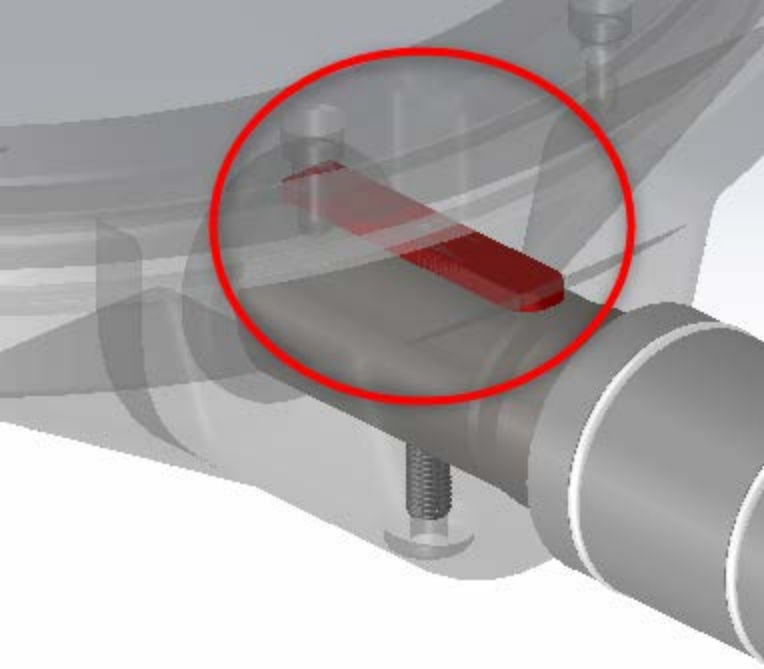
Material specifications

| Dikkan Figure No. | 28EAC.K66.PN16 |
|--------------------|-----------------|
| Part No. Component | GGG40 / AISI316 |
| 1 Body | GGG40 |
| 2 Disc | AISI316 |
| 3 Shaft | AISI316 |
| 4 Retaining ring | AISI316 |
| 5 Bearing bush | Bronze + Delrin |
| 6 Sealing ring | EPDM |
| 7 Fixings | A4 |
| 8 Gearbox body | GG25 |
| 9 Actuator body | GG25 |

Dimensions

| DN [mm] | Max. WP [bar] | Flange Connection | ØD [mm] | L [mm] | Ød [mm] | e1 [mm] | e2 [mm] | e3 [mm] | e4 [mm] | e5 [mm] | h1 [mm] | h2 [mm] | Weight [kg] |
|---------|---------------|-------------------|---------|--------|---------|---------|---------|---------|---------|---------|---------|---------|-------------|
| 100 | 16 | PN16 | 220 | 190 | 160 | 433 | 110 | 195 | 71 | 220 | 115 | 280 | 52 |
| 125 | 16 | PN16 | 250 | 200 | - | - | 125 | 208 | 71 | - | 130 | - | 55 |
| 150 | 16 | PN16 | 285 | 210 | 160 | 466 | 143 | 230 | 71 | 320 | 148 | 280 | 59 |
| 200 | 16 | PN16 | 340 | 230 | 160 | 490 | 170 | 254 | 71 | 320 | 175 | 280 | 73 |
| 250 | 16 | PN16 | 405 | 250 | 200 | 567 | 219 | 319 | 95 | 349 | 208 | 336 | 115 |
| 300 | 16 | PN16 | 460 | 270 | 200 | 595 | 244 | 348 | 95 | 349 | 235 | 349 | 139 |
| 350 | 16 | PN16 | 520 | 290 | 315 | 653 | 279 | 368 | 110 | 439 | 265 | 445 | 200 |
| 400 | 16 | PN16 | 580 | 310 | 315 | 698 | 301 | 413 | 110 | 439 | 295 | 460 | 231 |
| 450 | 16 | PN16 | 640 | 330 | 315 | 734 | 336 | 448 | 110 | 439 | 325 | 460 | 275 |
| 500 | 16 | PN16 | 715 | 350 | 315 | 779 | 368 | 494 | 156 | 485 | 363 | 508 | 351 |
| 600 | 16 | PN16 | 840 | 390 | 315 | 844 | 438 | 557 | 156 | 485 | 425 | 508 | 483 |
| 700 | 16 | PN16 | 910 | 430 | 200 | 861 | 480 | 613 | 190 | 444 | 460 | 556 | 686 |
| 800 | 16 | PN16 | 1025 | 470 | 315 | 947 | 533 | 661 | 190 | 519 | 518 | 644 | 861 |
| 900 | 16 | PN16 | 1125 | 510 | 315 | 1005 | 596 | 719 | 242 | 571 | 568 | 679 | 1.151 |
| 1000 | 16 | PN16 | 1255 | 550 | 630 | 930 | 663 | 810 | 250 | 335 | 633 | 500 | 1.407 |
| 1100 | 16 | PN16 | 1355 | 590 | 630 | 993 | 703 | 873 | 250 | 335 | 683 | 500 | 1.859 |
| 1200 | 16 | PN16 | 1485 | 630 | 630 | 1058 | 768 | 938 | 250 | 335 | 748 | 500 | 2.389 |
| 1300 | 16 | PN16 | 1585 | 670 | 630 | 1153 | 818 | 993 | 315 | 490 | 798 | 500 | 3.218 |
| 1400 | 16 | PN16 | 1685 | 710 | 630 | 1203 | 868 | 1043 | 315 | 490 | 848 | 500 | 3.868 |
| 1500 | 16 | PN16 | 1820 | 750 | 630 | 1270 | 935 | 1110 | 315 | 490 | 915 | 500 | 4.138 |
| 1600 | 16 | PN16 | 1930 | 790 | 630 | 1325 | 990 | 1165 | 315 | 490 | 970 | 500 | 5.218 |
| 1800 | 16 | PN16 | 2130 | 870 | 800 | 1490 | 1090 | 1295 | 400 | 610 | 1070 | 600 | 6.903 |
| 2000 | 16 | PN16 | 2345 | 950 | 800 | 1598 | 1198 | 1403 | 400 | 610 | 1178 | 600 | 9.103 |





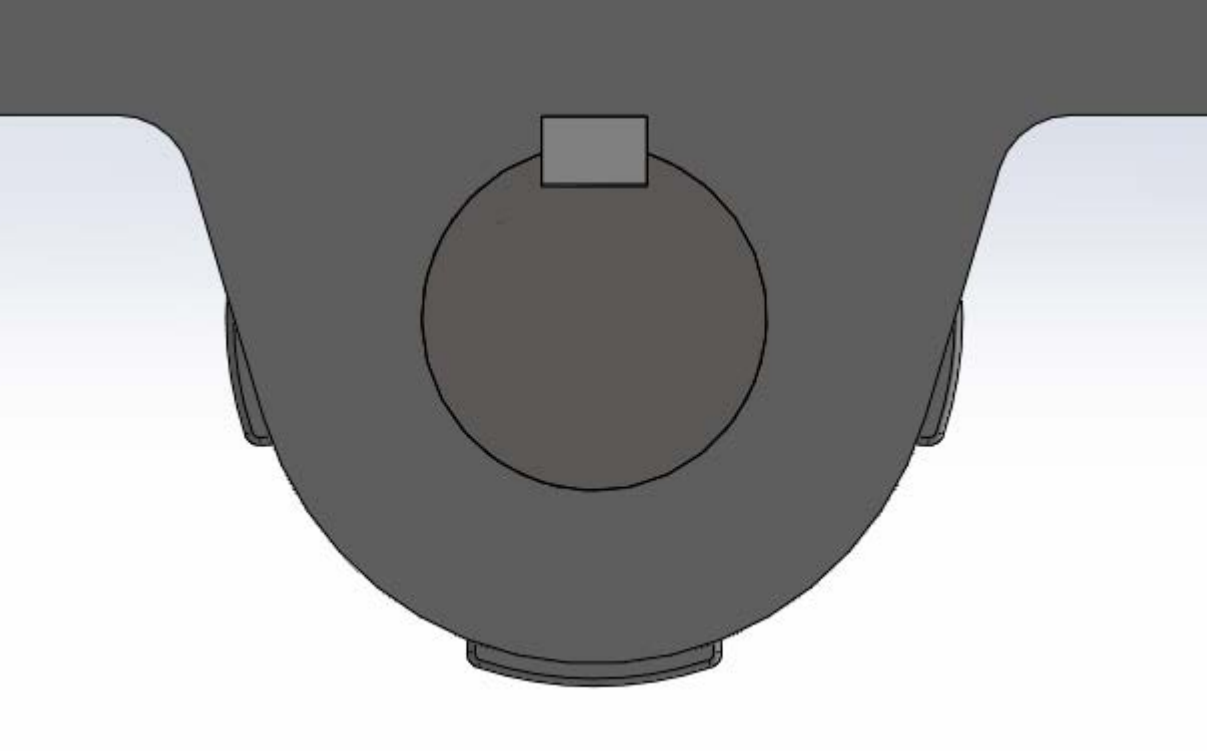


Table 2 — Dimensions of basic series

Dimensions in millimetres

| DN | Basic series | | | | | | | | | | | | | | | | | | | | | | DN | |
|-------|--------------|-------|-----|-------|-------|-----|----------------|----------------|-------|-----------------|-------|-----|-----|-------|-----|-----|-----|-----|-------|-----------------|-----------------|-----------------|-----|-------|
| | 1 | 2 | 3 | 4 | 5 | 7 | 8 ^a | 9 ^a | 10 | 11 ^a | 12 | 13 | 14 | 15 | 16 | 18 | 19 | 20 | 21 | 22 ^a | 23 ^a | 24 ^a | | 25 |
| 10 | 130 | 210 | 102 | — | — | 108 | 90 | 105 | — | — | 130 | — | 115 | — | — | 80 | — | — | — | 65 | 70 | — | — | 10 |
| 15 | 130 | 210 | 108 | 140 | 165 | 108 | 90 | 105 | 108 | 57 | 130 | — | 115 | — | — | 80 | 140 | — | 152 | 65 | 70 | 83 | — | 15 |
| 20 | 150 | 230 | 117 | 152 | 190 | 117 | 95 | 115 | 117 | 64 | 130 | — | 120 | — | — | 90 | 152 | — | 178 | 70 | 75 | 95 | — | 20 |
| 25 | 160 | 230 | 127 | 165 | 216 | 127 | 100 | 115 | 127 | 70 | 140 | — | 125 | 120 | — | 100 | 165 | — | 216 | 80 | 85 | 108 | — | 25 |
| 32 | 180 | 260 | 140 | 178 | 229 | 146 | 105 | 130 | 140 | 76 | 165 | — | 130 | 140 | — | 110 | 178 | — | 229 | 90 | 95 | 114 | — | 32 |
| 40 | 200 | 260 | 165 | 190 | 241 | 159 | 115 | 130 | 165 | 83 | 165 | 106 | 140 | 240 | 33 | 120 | 190 | 33 | 241 | 95 | 100 | 151 | — | 40 |
| 50 | 230 | 300 | 178 | 216 | 292 | 190 | 125 | 150 | 203 | 102 | 203 | 108 | 150 | 250 | 43 | 135 | 216 | 43 | 267 | 105 | 115 | 146 | — | 50 |
| 65 | 290 | 340 | 190 | 241 | 330 | 216 | 145 | 170 | 216 | 108 | 222 | 112 | 170 | 270 | 46 | 165 | 241 | 46 | 292 | 115 | 125 | 165 | — | 65 |
| 80 | 310 | 380 | 203 | 283 | 356 | 254 | 155 | 190 | 241 | 121 | 241 | 114 | 180 | 280 | 64 | 185 | 283 | 46 | 318 | 125 | 135 | 178 | 49 | 80 |
| 100 | 350 | 430 | 229 | 305 | 432 | 305 | 175 | 215 | 292 | 146 | 305 | 127 | 190 | 300 | 64 | 229 | 305 | 52 | 356 | 135 | 146 | 216 | 56 | 100 |
| 125 | 400 | 500 | 254 | 381 | 508 | 356 | 200 | 250 | 330 | 178 | 356 | 140 | 200 | 325 | 70 | — | 381 | 56 | 400 | — | — | 254 | 64 | 125 |
| 150 | 480 | 550 | 267 | 403 | 559 | 406 | 225 | 275 | 356 | 203 | 394 | 140 | 210 | 350 | 76 | — | 403 | 56 | 444 | — | — | 279 | 70 | 150 |
| 200 | 600 | 650 | 292 | 419 | 660 | 521 | 275 | 325 | 495 | 248 | 457 | 152 | 230 | 400 | 89 | — | 419 | 60 | 533 | — | — | 330 | 71 | 200 |
| 250 | 730 | 775 | 330 | 457 | 787 | 635 | 325 | 390 | 622 | 311 | 533 | 165 | 250 | 450 | 114 | — | 457 | 68 | 622 | — | — | 394 | 76 | 250 |
| 300 | 850 | 900 | 356 | 502 | 838 | 749 | 375 | 450 | 698 | 349 | 610 | 178 | 270 | 500 | 114 | — | 502 | 78 | 711 | — | — | 419 | 83 | 300 |
| 350 | 980 | 1 025 | 381 | 762 | 889 | — | 425 | 515 | 787 | 394 | 686 | 190 | 290 | 550 | 127 | — | 572 | 78 | 838 | — | — | — | 92 | 350 |
| 400 | 1 100 | 1 150 | 406 | 838 | 991 | — | 475 | 575 | 914 | 457 | 762 | 216 | 310 | 600 | 140 | — | 610 | 102 | 864 | — | — | — | 102 | 400 |
| 450 | 1 200 | 1 275 | 432 | 914 | 1 092 | — | 500 | — | 978 | 483 | 864 | 222 | 330 | 650 | 152 | — | 660 | 114 | 978 | — | — | — | 114 | 450 |
| 500 | 1 250 | 1 400 | 457 | 991 | 1 194 | — | — | 700 | 978 | — | 914 | 229 | 350 | 700 | 152 | — | 711 | 127 | 1 016 | — | — | — | 127 | 500 |
| 600 | 1 450 | 1 600 | 508 | 1 143 | 1 397 | — | — | — | 1 295 | — | 1 067 | 267 | 390 | 800 | 178 | — | 787 | 154 | 1 346 | — | — | — | 154 | 600 |
| 700 | 1 650 | — | 610 | — | 1 549 | — | — | — | 1 448 | — | — | 292 | 430 | 900 | 229 | — | — | 165 | 1 499 | — | — | — | — | 700 |
| 750 | — | — | 610 | 1 397 | 1 651 | — | — | — | 1 524 | — | — | — | — | — | — | — | — | 165 | 190 | 1 594 | — | — | — | 750 |
| 800 | 1 850 | — | 660 | — | 1 651 | — | — | — | 1 676 | — | — | 318 | 470 | 1 000 | 241 | — | — | 190 | 1 778 | — | — | — | — | 800 |
| 900 | 2 050 | — | 711 | — | 2 083 | — | — | — | 1 956 | — | — | 330 | 510 | 1 100 | 241 | — | — | 200 | 203 | 2 083 | — | — | — | 900 |
| 1 000 | 2 250 | — | 813 | — | — | — | — | — | — | — | — | 410 | 550 | 1 200 | 300 | — | — | 251 | 216 | — | — | — | — | 1 000 |
| 1 200 | — | — | — | — | — | — | — | — | — | — | — | 470 | 630 | — | 350 | — | — | 276 | 254 | — | — | — | — | 1 200 |
| 1 400 | — | — | — | — | — | — | — | — | — | — | — | 530 | 710 | — | 390 | — | — | 279 | — | — | — | — | — | 1 400 |
| 1 600 | — | — | — | — | — | — | — | — | — | — | — | 600 | 790 | — | 440 | — | — | 318 | — | — | — | — | — | 1 600 |
| 1 800 | — | — | — | — | — | — | — | — | — | — | — | 670 | 870 | — | 490 | — | — | 356 | — | — | — | — | — | 1 800 |
| 2 000 | — | — | — | — | — | — | — | — | — | — | — | 760 | 950 | — | 540 | — | — | 406 | — | — | — | — | — | 2 000 |

^a CTF dimensions for angle pattern valves.